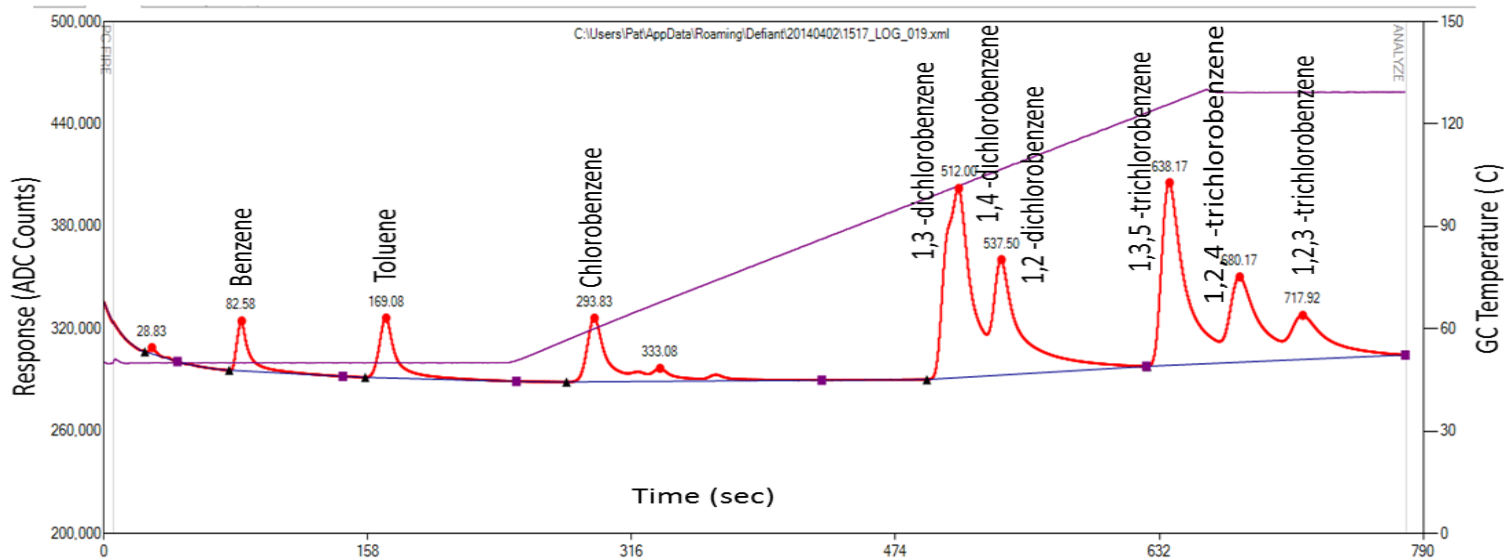




# FROG-4000

## Chlorinated Aromatics Settings



Parameter	Value
Ta	240
Tb	420
Tc	120
Ct	50
Ht	130
Collect	75
Clean	4
Presettle	4
Settle	2
Fire	6

If you are analyzing MTBE, BTEX, and chlorinated aromatics on the FROG-4000, the parameters on the left are the appropriate parameters. As you can see from the chromatogram above, 1,3-dichlorobenzene and 1,4-dichlorobenzene elute very closely, they may need to be combined during calibration. If you combine them in the calibration perhaps under the name 1,3+1,4 Dichlorobenzene. In addition, you will add their concentrations together as is done with para and meta xylenes. For example if your calibration standard contains 1,3-dichlorobenzene at 100ppb and 1,4-dichlorobenzene at 1,4-dichlorobenzene at 100ppb and you have combined them then their combined concentration is 200ppb.

Helpful hint: if you are interested only in the analysis of chlorobenzene, you may use the BTEX settings found on its settings page and you will see that it is nicely separated ahead of ethylbenzene.